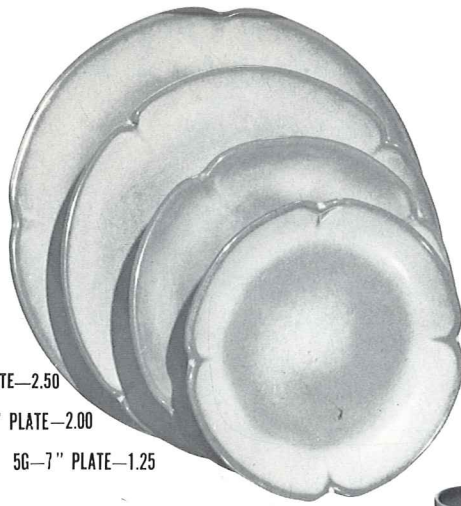




5V-2 QT. BAKER/BEAN POT-4.50



5F-10" PLATE-2.50

5FS-9" PLATE-2.00

5G-7" PLATE-1.25



\*5DC-DEMITASSE CUP-1.00

\*5DE-DEMITASSE SAUCER-1.00



\*5A-12 OZ. CREAMER-1.50



5W-3 QT. BAKER/BEAN POT-6.00



\*5NS-9" VEGETABLE-2.50



\*5CL-12 OZ. MUG-1.50



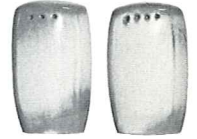
\*5B-SUGAR WITH LID-2.00



5CC-5 OZ. TEACUP-1.20



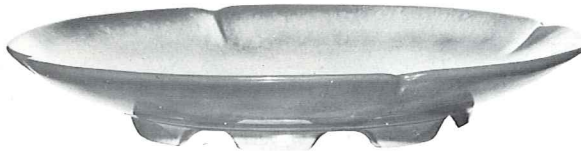
5C-CUP-1.20



\*5HS-SALT & PEPPER-2.00



\*5N-4 1/2 QT. BOWL-7.50



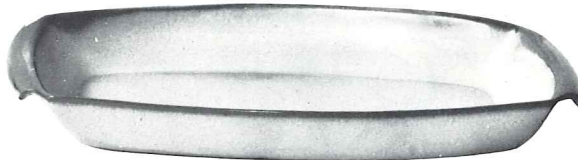
5FC-15" CHOP PLATE-10.00



5M-16 OZ. MUG-1.80



\*5L-12 OZ. TUMBLER-1.20



5P-17" PLATTER-7.50

5Q-13" PLATTER-3.50



\*5DB-6 OZ. SUGAR-1.25



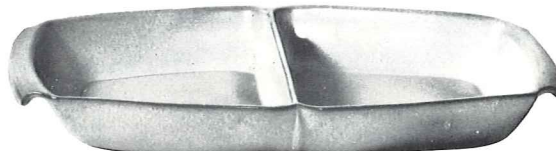
\*5DA-6 OZ. CREAMER-1.25



5XL-20 OZ. BOWL-1.50

5X-14 OZ. CEREAL-1.25

5XS-9 OZ. FRUIT-1.00



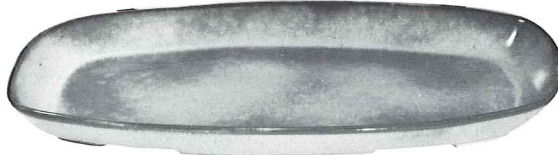
5QD-13" DIVIDED BOWL-3.50



5TL-12 CUP TEAPOT-5.00



\*218-12" BOWL-3.50



\*5QS-13" PLATTER-2.50

\*5PS-9" TRAY-1.50



5S-20 OZ. GRAVY BOAT-2.50



\*6T-6 CUP TEAPOT-3.50



\*6J-2 CUP TEAPOT-2.50



5D-3 QT. PITCHER-5.00

THIS PAGE AVAILABLE IN BROWN SATIN, DESERT GOLD, PRAIRIE GREEN & WOODLAND MOSS, EXCEPT WHERE NOTED\*.

\* AVAILABLE IN ALL COLORS-ADD 50% FOR FLAME

SIZES ARE APPROXIMATE AND MAY VARY SLIGHTLY.